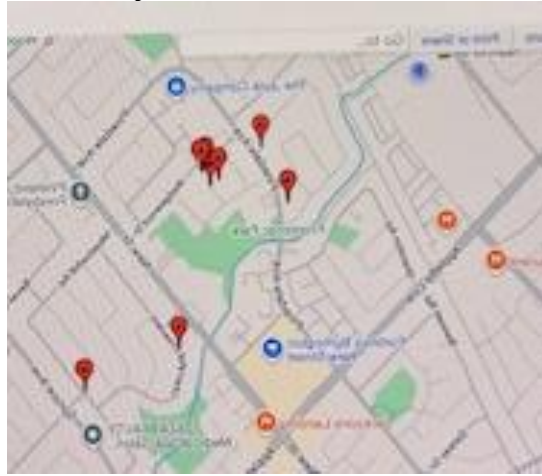


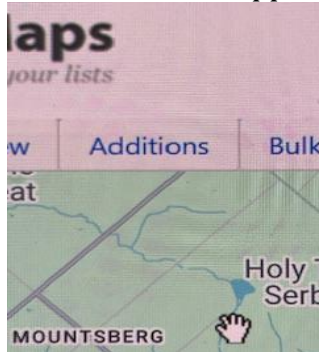
ZeeMap Instructions for Blue Bag Distribution

Please follow the steps below to mark your team's blue bag drop-off locations in Oakville, using our ZeeMap tool. This will help avoid overlapping and ensure we cover as many neighborhoods as possible.

1. Click on the shared ZeeMap link to open the map.
Red marker pins indicate streets where blue bags have already been dropped.



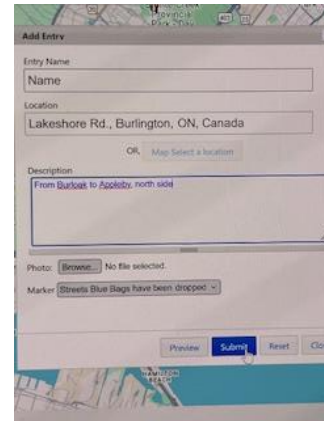
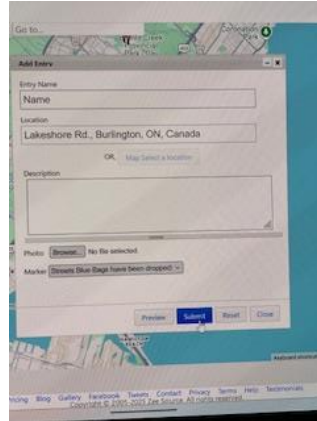
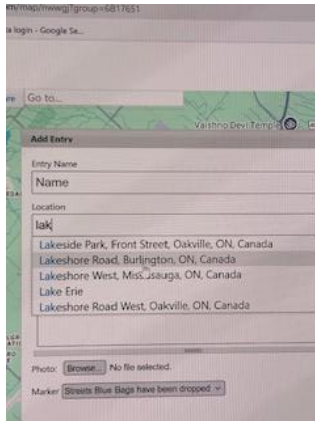
2. To add a new street, click the 'Additions' tab on the top left side of the map. A dropdown menu will appear.



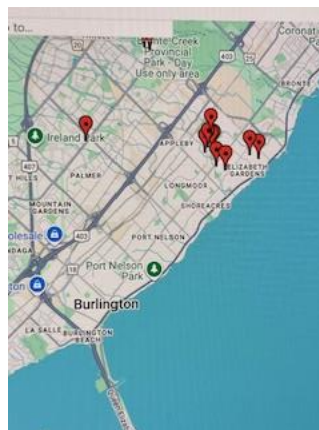
3. From the dropdown, select 'Add Marker – Simple'.



4. A pop-up window will open. Type in the street name — it will auto-populate using Google Maps — then click 'Submit' at the bottom of the window. (If you would like to add more detail – ie: specific part of a long street – just type in the detail window. If someone clicks on the red marker, it will show the detail added.)



5. Please add only one street at a time. To add more, simply repeat the process for each new street in the pop-up window.
6. Close the window (click the 'X' in the top-right corner). Your red marker pin(s) should now appear on the map.



Need help? Contact us at deb@giftofgivingback.ca